

STEFANIE H.
WEILL
C E N T E R

FOR THE PERFORMING ARTS

Technical Information

Updated February 2025



TABLE OF CONTENTS

| | |
|--|--------------|
| Contacts and Policies..... | 3 |
| Directions and Parking..... | 4 |
| Loading Dock..... | 5 |
| <u>Stage.....</u> | <u>5</u> |
| <u>House Information.....</u> | <u>6</u> |
| <u>Production.....</u> | <u>7</u> |
| <u>Rigging.....</u> | <u>8-9</u> |
| <u>Power and Lighting.....</u> | <u>10-11</u> |
| <u>Sound.....</u> | <u>12-14</u> |
| <u>Projection and Concert Equipment.....</u> | <u>15</u> |
| <u>Wardrobe.....</u> | <u>16</u> |
| <u>Risers.....</u> | <u>17</u> |
| <u>Miscellaneous and Facility Equipment.....</u> | <u>18</u> |
| <u>Available Rental Equipment.....</u> | <u>19-20</u> |

MANAGEMENT CONTACT



Katy Glodosky
Executive Director
kglodosky@weillcenter.com
(920) 208-0808 x 106

PRODUCTION CONTACT



Tracey Cook
Production Manager
tcook@weillcenter.com
(612) 889-0952

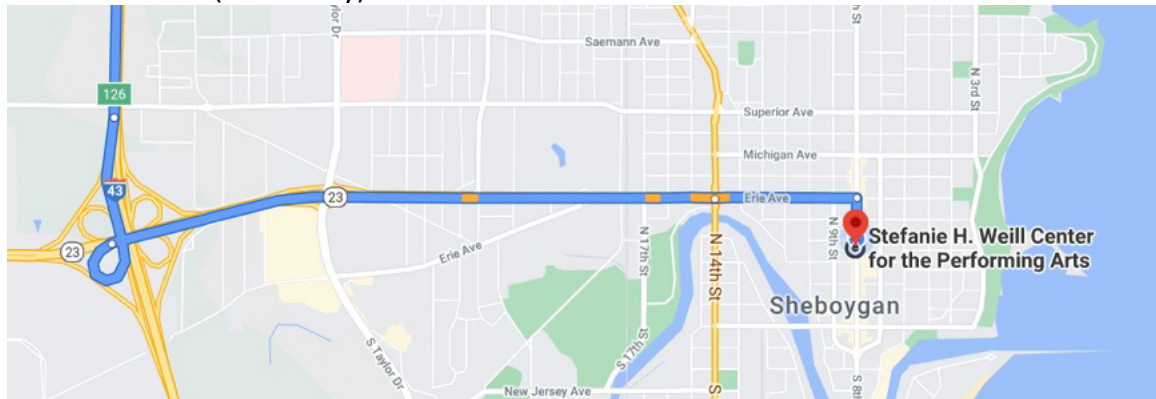
POLICIES

- No smoking anywhere in the theatre.
- No eating or drinking in the control booth.
- The touring company will be responsible for the replacement or repair of any damages that their staff may create to the equipment or the facility.
- No use of fog or haze without advanced permission.
- No person shall be allowed on the MOVING stage apron. Only once apron is in place and secured at stage, audience, or orchestra level will access be allowed!
- **USE OF EQUIPMENT:** All Weill Center equipment must be operated exclusively by Weill Center personnel at prevailing rates.
- **EQUIPMENT/SERVICES:** User shall pay for equipment or services requested or required based on current rates. Additional charges may apply for services or equipment that are unavailable or not in inventory. Use fee includes heat/air conditioning as appropriate for the season, non-theatrical lighting, electricity, and janitorial services.
- **FLAMEPROOFING:** All scenic materials used on the stage of the Center must conform to the Uniform Fire Code regarding flame-proofing.
- **STAGE FLOOR:** **The use of nails, screws, lags or other penetrating fastening devices in the stage floor is prohibited.** The use of rosin or other floor treatments directly on the stage floor is prohibited.
- **SIGNS AND POSTERS:** Signs or posters may not be displayed in any manner either inside or outside the facility, except where proper tack boards or easels are provided by the Weill Center. The use of tape, tacks, nails or staples on any wall, window or door surface is prohibited.

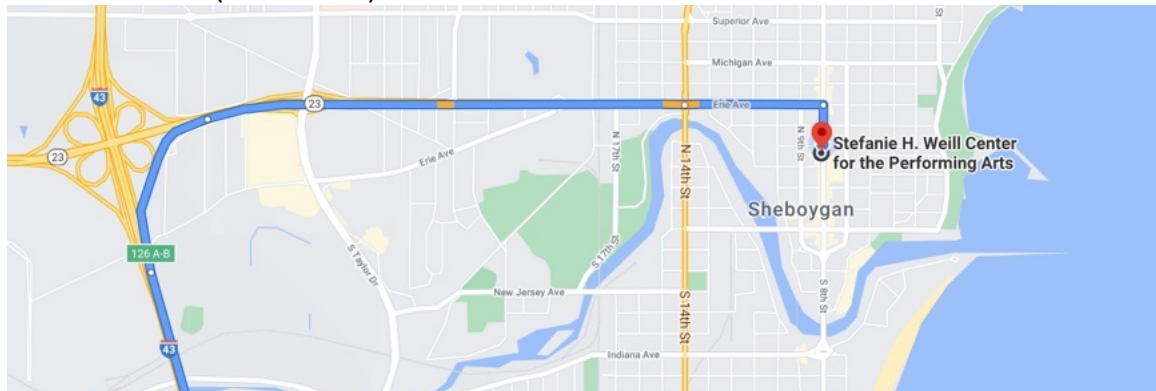
DIRECTIONS - Weill Center, 826 N 8th Street, Sheboygan, WI 53081

Sheboygan is located halfway between Milwaukee and Green Bay on Interstate 43. Take Exit 126 (Highway 23 East) into Sheboygan. Keep straight. Highway 23 will turn into Kohler Memorial Dr. and then into Erie Ave. Stay on Erie Ave. until you reach 8th St., turn right/south onto 8th St. and proceed 2 blocks. You will see the Sheboygan marquee on the right (west) side of the street.

From the north (Green Bay):



From the south (Milwaukee):



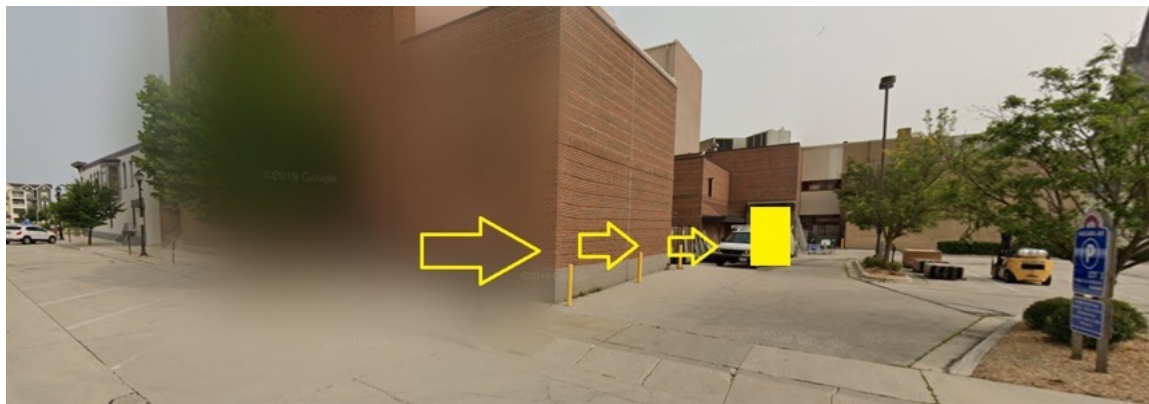
PARKING

There is metered parking (7am – 5pm) on all streets surrounding the theatre. Nights (after 5 p.m.) and weekends (Saturday and Sunday) parking is free. There are reserved parking spaces in the parking lot on the corner of 9th and Niagara St., which is to the rear of the theatre. The loading dock is located in the same parking lot. Additional (free) street parking is located between 7th and 8th St. on Niagara Ave.

Street / parking lot can be reserved for buses and semis if requested with venue in advance.

LOADING DOCK

The loading dock is located directly behind the building on 9th and Niagara Avenue.

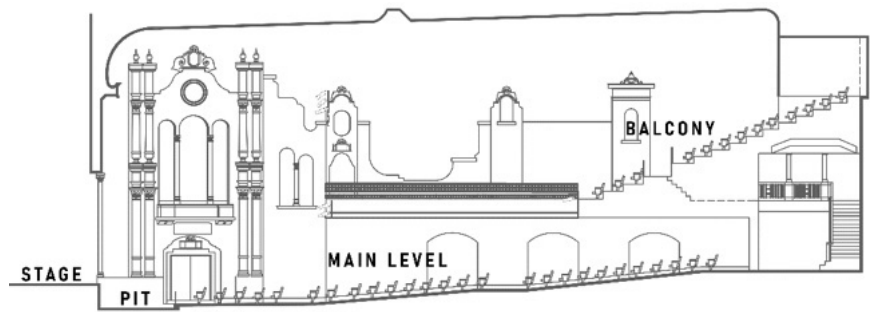


Loading dock is at dock height. There is only a single bay door (10' h x 8' w) with hydraulic dock leveler. Dock is located at stage height just off stage left. The dock is wedge shaped and currently houses Acoustical towers, scissor lift, drape hampers and Apron stairs. This leaves minimal space for equipment storage.

Shore power (30 amp & 50 amp) for buses is located next to loading dock. Please advance need for shore power so it can be turned on.

NOTE: parking in the dock during performances must be communicated during advance. (The loading zone contains Emergency Doors for House Right.)

HOUSE INFORMATION



Total Permanent Seats: 1151

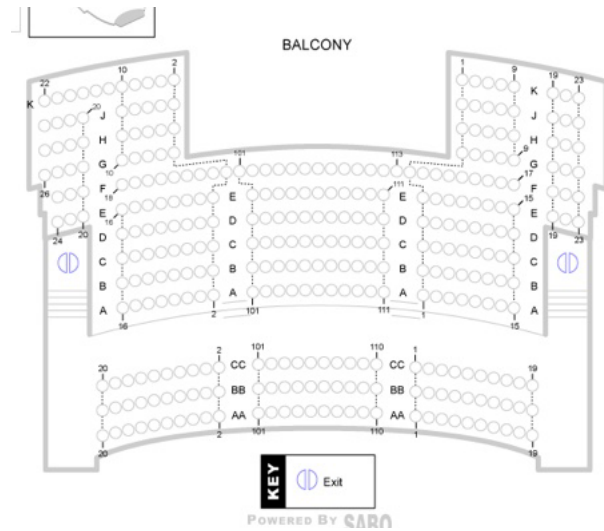
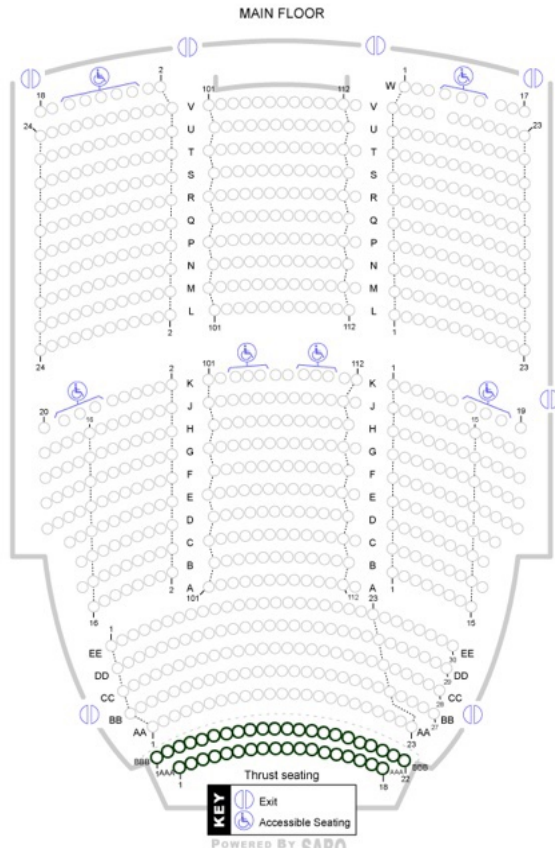
Main Floor: 813

Balcony: 338

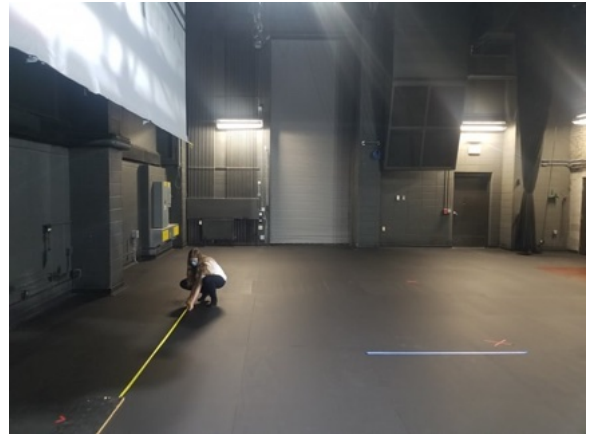
Temporary seating on Apron: 40

- Accessible seating is available only on the Main Floor
- The Balcony has no elevator and is only accessible via stairs





STAGE SPECIFICATIONS



| | |
|--|-----------------------------|
| Proscenium | Height27'6" |
| | Trim.....30' |
| | Width.....40' |
| Stage size | PL to back wall.....37'0" |
| | PL to DS edge.....2'3" |
| Wing space | SL.....14'x29' |
| | SR.....6'x26' |
| | US crossover.....3'0" |
| Crossover may also occur via basement corridor | |
| Orchestra pit/ Apron | Max. Length.....43'3" |
| | Max. Width.....11'7" |
| | Stage to Audience..... 3'2" |
| | Full Depth..... 11'0" |

*ORCHESTRA PIT IS MOVABLE

FLOOR

Deck in sprung deck Apron and first 10' of DS is Cherry tongue and groove. US is black painted plywood.

NOTE: *NO drilling or screwing into deck anywhere!*

PRODUCTION

*Note: No Rehearsal Rooms are available.

Green Room is located off stage right. It is equipped with a page/ audio monitor, microwave, sink, and refrigerator. Green Room is supplied with internet connection. Private restrooms are located across the hall.

GREEN ROOM

GREEN ROOM AMENITIES



RIGGING

Line Set Data:

| | |
|-------------------------------|-------|
| Grid Height..... | 55'6" |
| High Trim (empty batten)..... | 54'7" |
| Low Trim (empty batten)..... | 4'7" |
| High Trim (electrics)..... | 30'4" |
| Low Trim (electrics)..... | 2'4" |
| Total Line Sets..... | 38 |

single purchase counterweight system

| | |
|---------------------|-----------------------------|
| Arbor Capacity..... | (see Line Set Schedule) |
| Weight size..... | 18 lb. |
| Pipe Length..... | 52' (first 3 lines are 49') |
| Pipe Size..... | 2" OD Schedule 40 pipe |

Forklift is available by request

Rigging off the grid with chain motor is acceptable (fire curtain must remain uninhibited)

NO RIGGING POINTS EXIST DOWNSTAGE OF THE PROSCENIUM.

House Drape:

| ITEM | # | MATERIAL | W x H |
|-----------------------|---------|------------------------|-------------|
| Act Curtain | 1 | Regal Red, w/ fullness | 48' x 30' |
| Teaser | 1 pair | Regal Red, w/ fullness | 48' x 10' |
| Soft Tormentor | 2 | Regal Red, w/ fullness | 11'6" x 30' |
| Olio Curtain | 1 | Gold, with fullness | 52' x 32' |
| Legs | 3 pairs | Black velour | 8' x 30' |
| Borders | 3 | Black velour | 50' x 8' |
| Black Traveler | 2 | Black velour | 50' x 30' |
| Scrim, black | 1 | Sharkstooth | 52' x 29' |
| Cyclorama, light blue | 2 | Seamless muslin | 50' x 34' |

Legs and borders may be moved provided they are returned to original location

Electrics and travelers are in a PERMANENT position and can not be removed.

Scrim and Cycs can be moved with permission

| WEILL CENTER LINE SET SCHEDULE | | | | | | Updated 10/2024 | |
|-------------------------------------|------------|---------------------------|-----------------|-------------|--------------|-----------------|-----------|
| Stage Weights = 18.2 lbs or 8.25 kg | | | | | | | |
| DISTANCE FROM PLASTER LINE | LINE SET # | ASSIGNED LINES | MATERIAL WEIGHT | # OF BRICKS | ARBOR WEIGHT | NOTES | PERMENANT |
| 1'-3" | 1 | ACT CURTAIN | | | 1287 LBS | GUILLOTINE | YES |
| 2"-6" | 2 | TEASER | | | 1287 LBS | RED | |
| 3'-0" | 3 | TORMENTOR LEGS | | | 1287 LBS | RED WITH TRAVEL | YES |
| 3'-7" | 4 | 6 X 9 PROJECTION SCREEN | 72.8 lbs | 4 | 1287 LBS | | YES |
| 4'-7" | 5 | 1ST ELECTRIC | | | 2360 LBS | 30' OUT TRIM | YES |
| 5'-11" | 6 | 2ND ELECTRIC | | | 2360 LBS | BORDER LIGHTS | YES |
| 6'-9" | 7 | | | | 1287 LBS | | |
| 7'-7" | 8 | OLIO | 491.4 lbs | 27 | 1287 LBS | GOLD | YES |
| 8'-2" | 9 | | | | 1287 LBS | | |
| 10'-0" | 10 | MOVIE SCREEN | 600.6 lbs | 33 | 1287 LBS | WITH TRAVELER | YES |
| 10"-9" | 11 | BORDER | 91 lbs | 5 | 1287 LBS | | |
| 11'-6" | 12 | LEGS | 72.8 lbs | 4 | 1287 LBS | | |
| 12'-2" | 13 | DS ORCHESTRA SHELL | 1,802 lbs | 99 | 2574 LBS | | YES |
| 13'-6" | 14 | 3RD ELECTRIC | | | 1931 LBS | 30' OUT TRIM | YES |
| 14'-4" | 15 | | | | 1287 LBS | | |
| 14'-11" | 16 | | | | 1287 LBS | | |
| 15'-7" | 17 | | | | 1287 LBS | | |
| 16'-4" | 18 | | | | 1287 LBS | | |
| 16'-11" | 19 | MID-STAGE TRAVELER | 618.8 lbs | 34 | 1287 LBS | | YES |
| 18'-3" | 20 | BORDER | 91 lbs | 5 | 1287 LBS | | |
| 18'-10" | 21 | LEGS | 72.8 lbs | 4 | 1287 LBS | | |
| 19'-9" | 22 | | | | 1287 LBS | | |
| 20'-10" | 23 | 4TH ELECTRIC | | | 1931 LBS | 30' OUT TRIM | |
| 22'-4" | 24 | | | | 1287 LBS | | |
| 23'-1" | 25 | US ORCHESTRA SHELL | 1,802 lbs | 99 | 2574 LBS | | YES |
| 24'-4" | 26 | BORDER | 91 lbs | 5 | 1287 LBS | | |
| 25'-0" | 27 | | | | 1287 LBS | | |
| 25'-8" | 28 | | | | 1287 LBS | | |
| 26'-4" | 29 | REAR TRAVELER | 618.8 lbs | 34 | 1287 LBS | | YES |
| 27'-1" | 30 | | | | 1287 LBS | | |
| 28'-4" | 31 | 5TH ELECTRIC | | | 1931 LBS | 30' OUT TRIM | |
| 29'-6" | 32 | 6TH ELECTRIC | | | 1931 LBS | BORDER LIGHTS | YES |
| 30'-11" | 33 | LEGS | 72.8 lbs | 4 | 1287 LBS | | |
| 31'-6" | 34 | | | | 1287 LBS | | |
| 31'-10" | 35 | 20 x 14 PROJECTION SCREEN | | | 1287 LBS | | |
| 32'-4" | 36 | BLACK SCRIM | 72.8 lbs | 4 | 1287 LBS | | |
| 32'-11" | 37 | BLUE CYC (NEW) | 109.2 lbs | 6 | 1287 LBS | | YES |
| 33'-6" | 38 | BLUE CYC (OLD) | 91 lbs | 5 | 1287 LBS | | YES |

SHOW POWER

| | |
|------------------------------------|----------------------|
| 400 amp, 3 phase, 5 wire, 120/208v | USL |
| 200 amp, 3 phase, 5 wire, 120/208v | USL |
| 100 amp, 3 phase, 5 wire, 120/208v | DSL (sound isolated) |

LIGHTING

Dimmers:

ETC Sensors 20a. / 2.4 k
 209 available stage circuits
 80 House, Lobby and Architecture lighting

Control:

ETC Ion Xe 20 console with 2048 outputs
 ETC Ion ETC 2x20 fader wing
 Wireless remote focus available

Backup lighting consoles:

- ETC Expression 3 400 channels, 600 cues
- * Remote Focus Unit available*

Control Location:

Primary position is at back of house. There is a secondary location on the stage right loft.

Circuit Positions

| | | | |
|---------|--|---------|-------------------------------|
| 1-26 | 1 st Electric | 165-174 | HL Box Boom |
| 27-44 | 2 nd Electric (Borderlight) | 175-179 | Proscenium down light |
| 45-62 | 3 rd Electric | 180-181 | Stage & Apron Edge light |
| 63-80 | 4 th Electric | 182-184 | HR & HL Balcony Boom |
| 81-98 | 5 th Electric | 189-194 | SR Torm |
| 99-116 | 6 th Electric (Borderlight) | 195-200 | SL Torm |
| 117-128 | HR Beam position | 201-208 | SR Floor pockets & drop boxes |
| 129-140 | HL Beam position | 209-216 | SL Floor pockets & drop boxes |
| 141-154 | Balcony Rail | 217-224 | US Floor pockets & drop boxes |
| 155-164 | HR Box Boom | 225-228 | Apron Floor pockets |

2nd thru 6th Electrics – circuits on stage left repeat on stage right

Color:

We only stock a limited amount of Roscolux color media

Instruments:

| No. | Type | Lamp |
|-----|---|----------|
| 4 | ETC Source Four 10 deg. | HPL 750 |
| 24 | ETC Source Four 19 deg. (6x16) | HPL 750 |
| 24 | ETC Source Four 26 deg. (6x12) | HPL 750 |
| 20 | ETC Source Four 36 deg. (6x9) | HPL 750 |
| 6 | ETC Source Four 50 deg. (6x4.5) | HPL 750 |
| 11 | Martin MAC 250+ moving light fixtures | |
| 30 | Elation LED Par (SixPar 200) fixtures | |
| 8 | Chauvet Rouge R2X Wash Moving Light 2.8Amp | |
| 32 | Source 4WRD Par body with retrofit (Orchestra shell ceiling and proscenium down lights) | |
| 15 | Altman Sky Cyc single cell | FFT 1000 |
| 4 | Altman 7.5 ft. 3 cir. Strip light | 300BR40 |
| 2 | Lycian 2000 follow spot | MSR 1200 |
| 2 | 44 ft. 4 cir. Border lights | 300BR40 |

Hazer: Diffusion DF-50

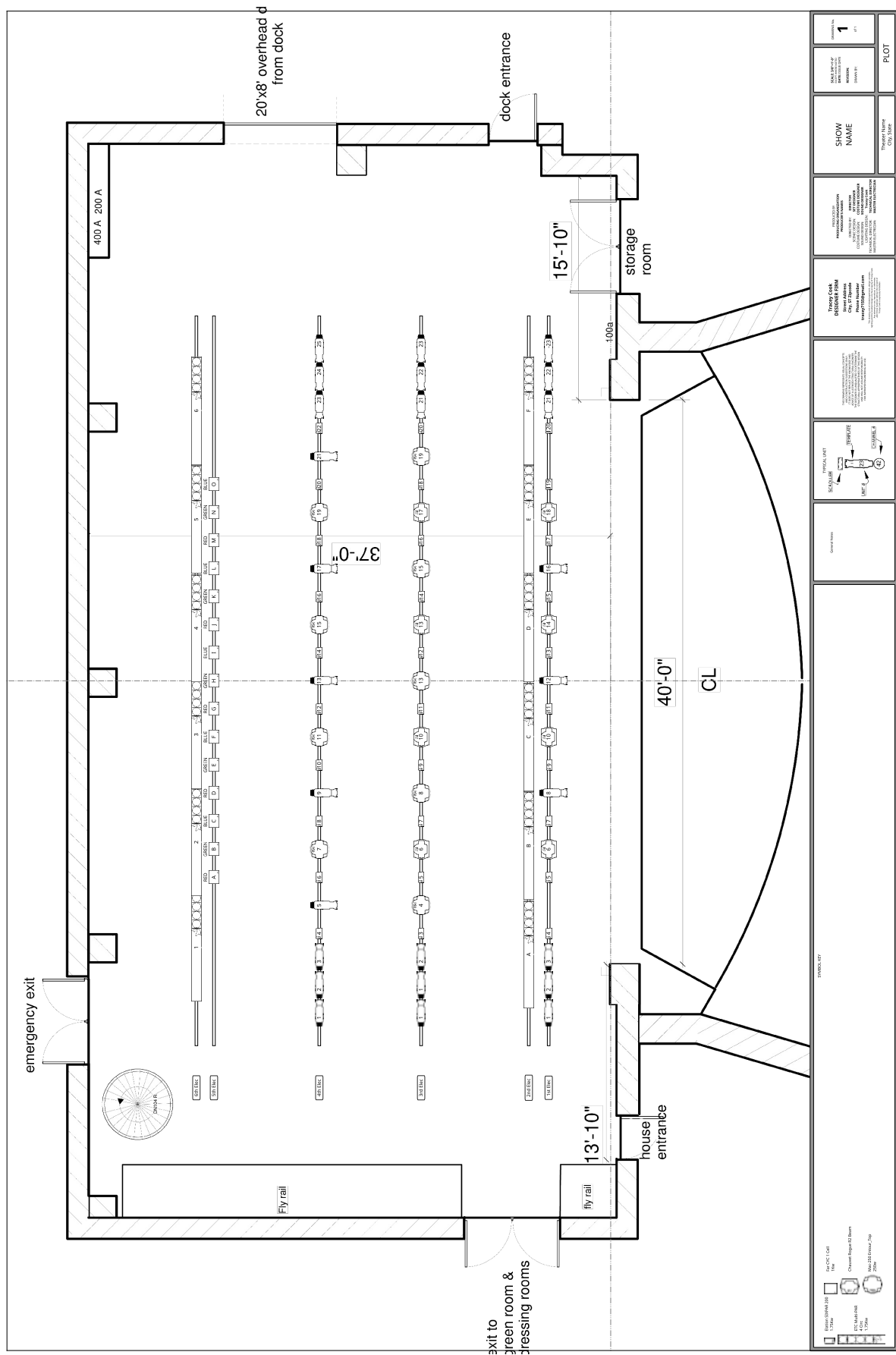
*Must go into "EVENT MODE" prior to using haze

Accessories:

22 - Gobo holder - size "A" steel
20 - donuts 5 1/4"
4 - Source 4 gel extenders
0 - barndoors
0 - tophats
0 - booms
25 - sidearms

Cable:

20 @ 10' stagepin
15 @ 15' stagepin
10 @ 25' stagepin
10 @ 50' stagepin
25 stagepin twofers
5 stagepin – Edison adapter
Edison
2 @ 10' DMX cable
8 @ 25' DMX cable



SOUND

Sound Mix Location:

House system is located at back of house (Location is under the balcony)

- Approximately 80ft from stage.
- Snake Run is approximately 150 ft from SR to Back of House

Secondary mix position located house right mid aisle row K.

- Approximately 50ft from stage & 20ft HR of Center
- Can accommodate 8' by 10' Foot Print

Mixing Console:

Midas M32R 32X16 audio board

Speakers:

Hanging of tour PA must be discussed with Weill Center prior to arrival of tour.

NO RIGGING POSTIONS EXIST DS OF PROSCENIUM

Sub position on stage apron is variable (generally center is best)

Main House Left/Right

| | | |
|----------------|--------------------|----------------|
| NEXO: GEOS1210 | Main Line Array | 18-9 per side |
| NEXO: GE051230 | Main Line Array | 2 - 1 per side |
| NEXO: RS18 | Dual 18" Subwoofer | 4-2 per side |

Front Fills

| | | |
|------------------|-------------------|---|
| NEXO: PS8U | 8" 2 Way Speaker | 6 |
| NEXO: PS8U-TD-V3 | System Controller | 1 |

Under Balcony

| | | |
|-----------------|-------------------|---|
| JBL: Control 30 | 10" 3 Way Speaker | 3 |
|-----------------|-------------------|---|

Backup Subs:

2 – AGAPE 2X15 subwoofers

Amps:

Main House Left/Right

| | | |
|----------------|-----------------|---|
| NEXO: NXAMP4X4 | Main Line Array | 1 |
| NEXO: NXAMP4X1 | Main Line Array | 1 |
| NEXO: NXAMP4X4 | Subwoofers | 1 |

Under Balcony

| | | |
|-------------------|---------------|---|
| Crest Audio: CA4 | (left! Right) | 1 |
| Crest Audio: CAI2 | (center) | 1 |

Monitor Amp

| | |
|-------------|----------------------|
| Rane: MA 65 | (6 separate channel) |
|-------------|----------------------|

Amps:

EV 2.0 KW (2ch)
Yamaha P4500 (2ch)
Crest CA4 (2ch)

Monitor Amp: RANE MA 65 multi channel amp (6 separate channels)
Under Balcony Amp: RANE MA 65 multi channel amp (Left / Center / Right)

Signal Processors:

BSS: BLU-100 12 in 8 out Main PA DSP
BSS: BLU-BOB2 8 Channel Analog Break-out Box

Playback:

Teac Professional
Stereo and Compact Disk player

Microphones:

8 - Shure SM 58A
8 - Shure SM 57A
3 – Shure MX 391/C
8 – Shure MX 202W/C

Wireless:

2 – ULX-D Mics Beta 58 (Band G50)
2 – ULX-D Belt Backs
2 - DPA – 4088 Over the Ear (Cardiod)

Receiver – Shure ULXD 4Q (Band G50)
8 - WL 93 lavalier (Omni)

Lavalieres and handhelds share frequency channels

Wiring Locations:

US – 3 channels
DSL - 35 channels
DSR - 10 channels
Apron - 2 channels (No Phantom)

CAT 6A:

5 Ports located on Backstage Wall Left Corner
runs to:
5 Ports located at FOH Tech Booth

Cable:

- 21 – 25' 3 pin XLR
- 1 – 40' 3 pin XLR
- 12 – 50' 3 pin XLR
- 2 – 3' XLR F/F turnaround
- 2 – 3' XLR M/M turnaround
- 1 – 6" XLR M/2F splitter
- 1 – 12" XLR F/3M splitter

- 3 – 8 channel Whirlwind box (ISO or Direct output)
- 5 – 50' cables Multipin
- 1 – 16 channel Whirlwind box (ISO or Direct output)
- 2 – 50' cables Multipin

- 2 – (3') ¼" phono m/m cable
- 1 – (10') ¼" phono m/m cable
- 1 – (10') ¼" phono – RCA m/m cable

- 2 – 10' Neutrik speaker cable
- 4 – 50' Neutrik speaker cable

Hardware:

- 17 – mic stands
- 10 – boom bases
- 2 – 6" table top stand

- 4 – Pro Co DB-1 Direct box
- 2 – Stewart Electronics ADB-1 Direct box
- 2 – Pro Co AV-1 A/V interface
- 4 – Pro Co MS-2 Mic splitter
- 4 – Atlas speaker tripod (8' max. height)

PRODUCTION COMMUNICATIONS

- 2 channel Clear-Com system to all production areas as well as the ticket booth inputs located SL, SR, spot booth, board op booth, and orchestra pit
 - *Channel B is tied into backstage monitor system*
 - *Pick up mics for monitors are tied into sound board, sound board must be on to operate monitors*
- 6 - Belt packs, single channel
- 11 – single muff headsets

1 – Christie Mirage

- ## Movie System

| | |
|--|-----------------|
| 1 - Dolby Digital Cinema Processor | model # CP 650 |
| 3 - JBL Professional Full range speaker | model # 2446 H |
| 3 - JBL Professional Horn speaker | model # 4638 TH |
| 2 - JBL Professional Subwoofer | model # 4642 A |
| 15 - JBL Surround Sound speakers | |
| 2 - QSC DCA1222 Digital Cinema Amp for Cinema Surround Sound speakers | |
| 4 - QSC DCA2422 Digital Cinema Amp for Full Range SR/ SL Speakers & Subwoofers | |
| 1 - QSC ISA800T Pro Amp | |
| 1 - 38' x 18' projection screen 1:1 | |

Orchestra Shell:

Music:

Pianos:

18

ORCHESTRA SHELL



WARDROBE

Dressing Rooms:

All rooms are located on 2nd Floor off SR. Dressing rooms can be reached either by stairs SR or by the lobby elevator located HL.

All dressing rooms contain a toilet/s, fully lit mirrors and shower/s.

Lockable lockers

| | | |
|---|---------------------|--------------|
| 2 | Star Dressing Rooms | 1-2 ppl each |
| 1 | Women's Chorus | 9-15 ppl |
| 1 | Men's Chorus | 6-10 ppl |



Laundry Room:

| | |
|---------------|-------------------|
| Washer | 1 - Top loading |
| Dryer | 1 - Front loading |
| Rolling racks | 5 - 6' x 6' |
| Iron & board | 2 |

MISCELLANEOUS / FACILITY EQUIPMENT

STAGE RISERS:

12 Wenger StageTek Risers
Black Cracked Ice Surface

Riser Heights Available:

6 inch
12 inch
18 inch
24 inch

Marley Dance Floor to cover entire stage area from proscenium to upstage wall
(Light Gray)

1 – Podium with light and shock mount microphone attachment

Ladder: 1 - 6' fiberglass
1 - 8' fiberglass
1 - 20' fiberglass extension

Scissor lift: Electric drivable w/ 22' maximum height

Sandbags
4 – 25lb
4 – 50lb
2 – 75lb
5 – 100 lb
2 – 150 lb